

Merseyside Recycling  
and Waste Authority

# Climate Action Plan 2022



@zerowastelcr



MERSEYSIDE RECYCLING & WASTE AUTHORITY



MERSEYSIDE RECYCLING AND WASTE AUTHORITY

# Contents

**Foreword** 03

**The challenge** 04

**Our vision** 06

The Waste Hierarchy 06

Sustainable Development Goals 06

**Key themes** 07

People 08

Planet 09

Economy 10

**Our response** 11

**Reviewing & reporting** 12



# Foreword

## MRWA Climate Action Plan

We are living in a time of great change. Our everyday lives and actions have an enormous impact on the communities and places we live and value, both locally and further afield. Here in the Liverpool City Region, the need to combat the climate emergency and change how we use, reuse, and save resources has never been more important.

**“We are living in a time of great change”**

As the Chairperson and Chief Executive of Merseyside Recycling and Waste Authority (MRWA), we are pleased to provide our new **Climate Action Plan**. Our Plan focuses on three key areas, People, Planet and Economy, linking behavioural change, resource consumption, biodiversity and the circular economy. The Action Plan demonstrates the changes and improvements we will make to meet our dual goals of net zero carbon and zero waste by 2040.

Our plans are ambitious, and we are committed to playing our part alongside our City Region stakeholders, including; residents, community groups, Small and Medium Enterprises (SMEs), local councils, contractors and our employees.

**Working together, we can achieve our vision of a low carbon circular Liverpool City Region and deliver a prosperous future for our communities.**



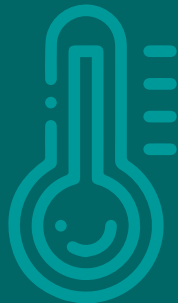
**Councillor Tony Concepcion**  
Chairperson,  
Merseyside Recycling and Waste Authority



**Carl Beer**  
Chief Executive,  
Merseyside Recycling and Waste Authority

# The challenge

From 2010 to 2019, average annual global greenhouse gas emissions were at their highest levels in human history.



Without immediate and deep emissions reductions across all sectors, limiting global warming to:

**1.5°C is beyond reach**

Intergovernmental Panel on Climate Change (IPCC) Sixth Assessment Report (AR6) April 2022

**// We are at a crossroads. The decisions we make now can secure a liveable future. We have the tools and know-how required to limit warming."**

- Hoesung Lee,  
IPCC Chair.

In 2019, MRWA recognised that people, the economy, and the planet were suffering from the escalating effects of human-induced climate change. In response, we declared a climate emergency and committed to reducing the climate change impacts associated with our activities.

We developed a [Zero Waste website](#) to support everyone across the Liverpool City Region (LCR) to prevent waste and reuse, repair and recycle more. Throughout the Covid-19 pandemic, we have also continued to deliver our annual [Community Fund](#).

Across our estate, we have assessed opportunities to increase renewable energy generation and reduce our energy usage, working with nature to minimise and better mitigate emissions from our closed landfill sites.



# The challenge

Following our declaration, we developed the Climate Action Plan 2020 and, over the last two years, we have made good progress against the Plan. We have completed a carbon emissions baseline study and created a tool to measure our emissions annually. As well as this, we assessed the key materials in our waste to help prioritise actions to reduce waste and climate impacts.

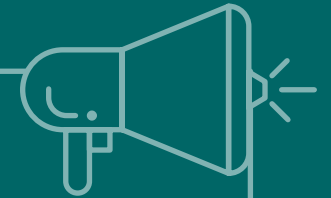


## Case Study

### Zero Waste LCR

In February 2022 MRWA launched our new public facing brand, 'Zero Waste Liverpool City Region'. The aim for Zero Waste LCR is to communicate directly with residents, community groups and businesses in Liverpool City Region, share information, best practice and enable people to start their zero waste journey.

It includes a website and social media which share tips, facts, news updates and promote our zero waste projects and activities. We will provide resource packs, attend community events and develop our reuse map providing tools and information needed to move up the waste hierarchy.



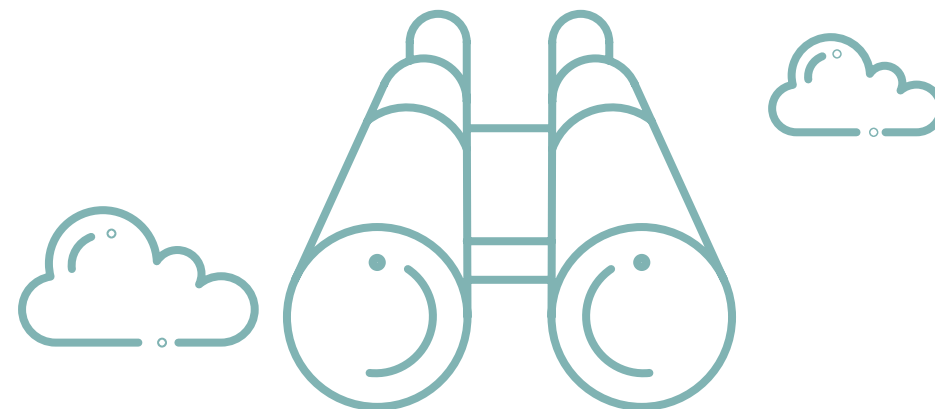
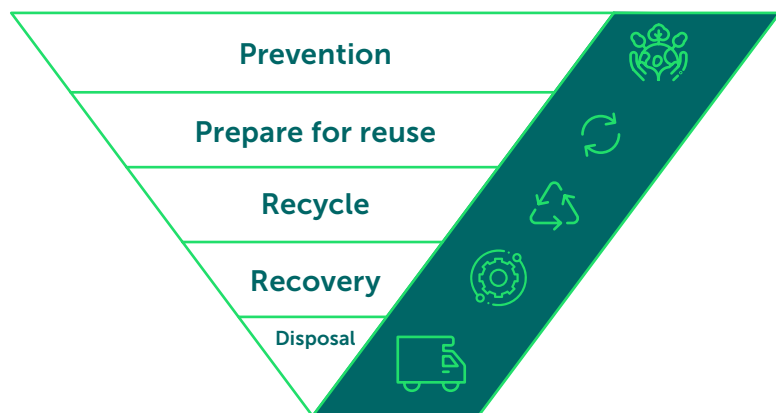
# Our vision

We operate at the interface between local action, national policies and international agreements, and we are integral to the sustainable management of resources and waste in the Liverpool City Region. Our mission statement and corporate aims address the need to mitigate the climate effects associated with waste management:

**“ To ensure that we reduce the impact of our actions on climate change and improve the sustainable management of waste and resources.”**

## The Waste Hierarchy

We are committed to moving up the waste hierarchy to minimise waste. Prevention is our priority and the best way to conserve resources and reduce emissions



## Sustainable Development Goals

The 17 United Nations (UN) Sustainable Development Goals (SDGs) were adopted by all UN Member States in 2015. The SDGs are a collection of interlinked global goals designed to be a blueprint for achieving a better and more sustainable future for all.

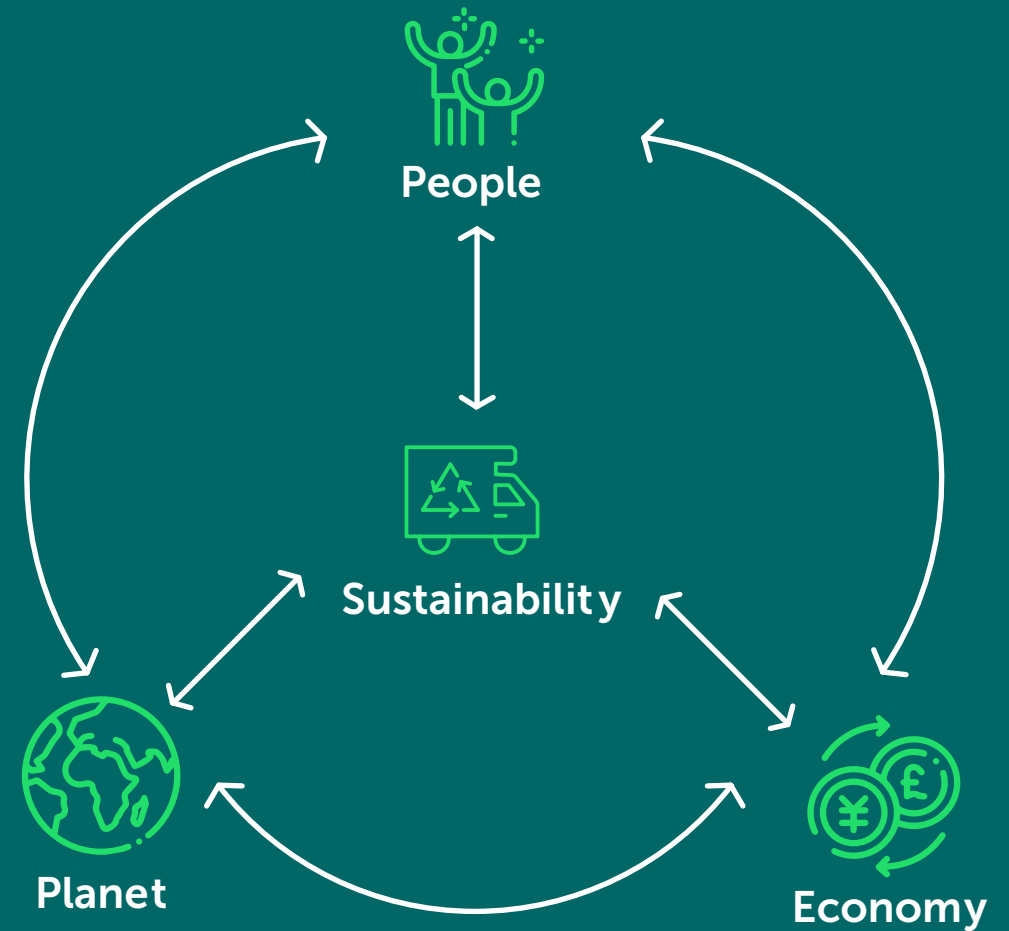
One of our aims is to measure, and report on, climate change impacts and sustainability improvements. From the 17 SDGs published by the UN, we have identified our four priority SDGs as 13. Climate Action, 12. Responsible Consumption & Production, 11. Sustainable Cities and Communities and 3. Good Health and Wellbeing.



# Key themes

Our key themes are People, Planet and Economy. These are the three focus areas of sustainability and align with the priorities of our LCR partners. A shift towards a more circular economy can play a significant role in meeting climate targets and bring crucial environmental, economic, and social benefits to the region.

“People, Planet & Economy”



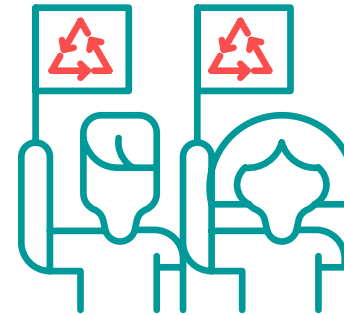
# Key themes

## People

The wellbeing of LCR residents, MRWA employees, our Members, and Partners is central to our commitment to meet net zero carbon and zero waste goals. We want to play a part in creating a City Region where our use of resources creates social value, thriving communities and prosperity for all.

Lifestyles need to be sustainable and less carbon-intensive. Material resources should be kept in use for longer and recycled into new products at the end of their lives. Our focus is on changing behaviours. We need our staff, Members and Partners to lead by example. We need to enable LCR residents to reduce their waste by following the waste hierarchy and viewing waste as a valuable resource.

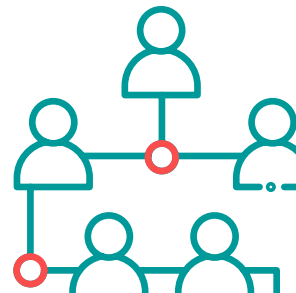
**“Climate change will impact our lives. In order to mitigate the effects, a system change will be needed.”**



**Empowering our staff to reduce the impact of carbon-intensive activities, in the office and at home**



**Raising LCR residents' awareness of the impact of climate change through education and campaigns**



**Enabling residents and community groups to move up the waste hierarchy**

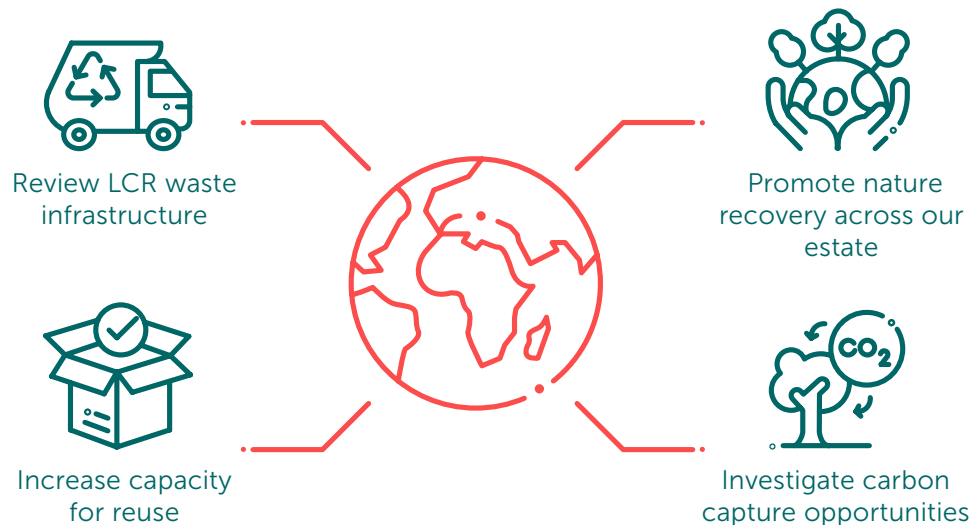


# Key themes

## Planet

The planet is warming - from the North Pole to the South Pole - and globally, the last eight years have been the hottest ever recorded, according to NASA. The world must halt its increase in greenhouse gases within the next three years, cut them by 43% in the next seven, and eliminate them entirely by 2050 to avoid catastrophic and irreversible climate change impacts this century (IPPC 2022).

Using resources wisely and reducing waste is critical to achieving net zero carbon and sustaining our planet. We want to focus on how MRWA can move towards a low carbon zero waste Liverpool City Region, where a healthy and diverse natural environment enriches lives and strengthens the economy.



**Using resources wisely and reducing waste is critical to achieving net zero carbon and sustaining our planet."**



# Key themes

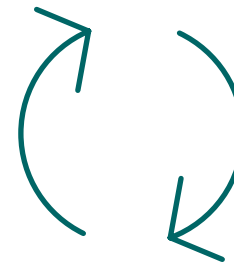
## Economy

Climate change, and a warming planet, have the potential to significantly harm the economy. Switching to a low carbon circular economy will create a wealth of green jobs and will open up new opportunities for sustainable businesses, as well as bring benefits to nature recovery.

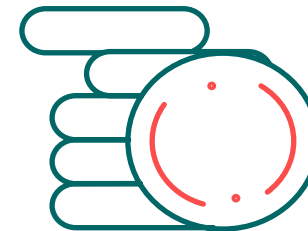
**// ...will create a wealth of green jobs and will open up new opportunities"**



**Educating people, organisations, and businesses about the value of the circular economy**



**Developing circular economy hubs and a network, offering opportunities for reuse, upcycling, and repair as well as a range of social value and wellbeing benefits**



**Adapting to net-zero while offering the best value and spending money wisely**

# Our response



Deliver a zero waste campaign across LCR with internal and external engagement



Establish business support programmes to expand circular activity in the LCR



Review priority materials for climate action following 2021 waste composition analysis



Develop awareness resources to support residents and community groups in moving towards zero waste



Increase biodiversity and support local nature recovery



Engage with MRWA staff to raise awareness about the circular economy, zero waste and net zero carbon



Establish a three-year food waste prevention and reduction plan



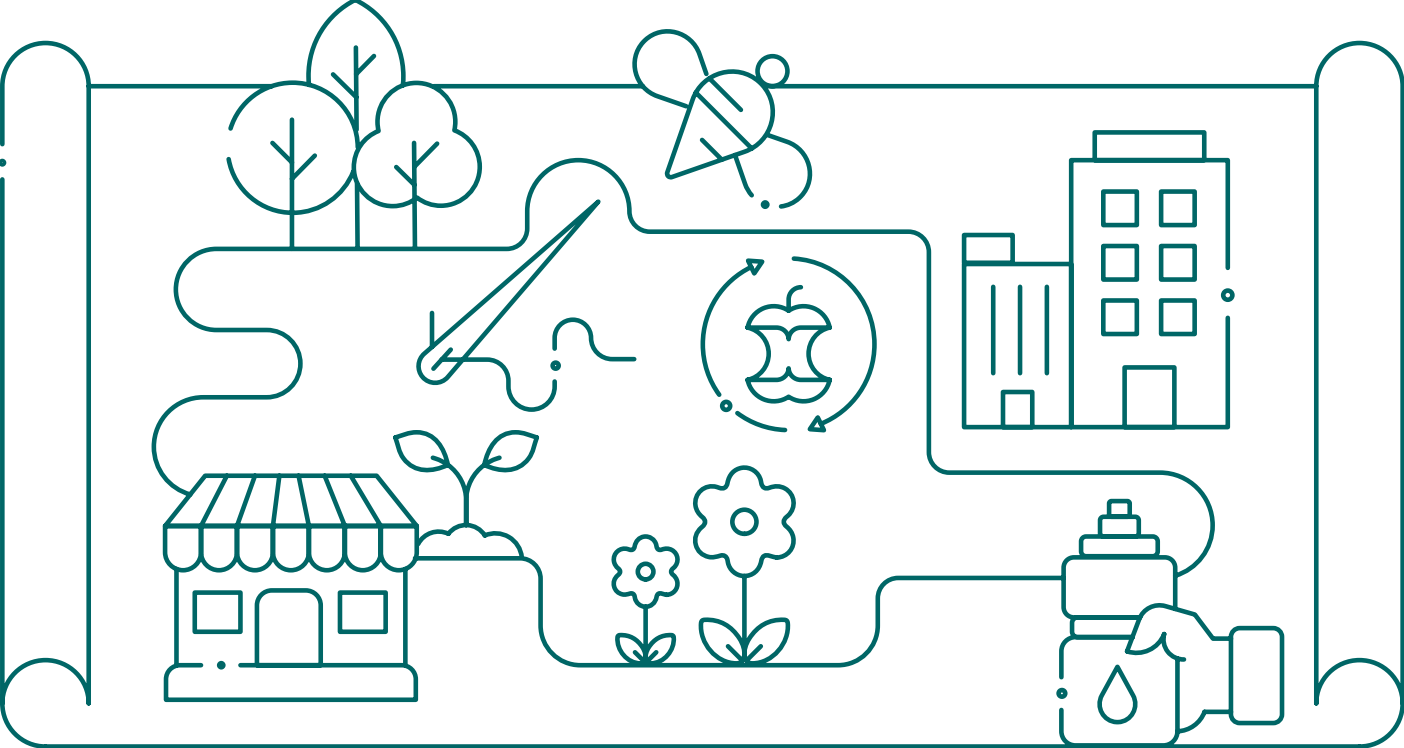
Investigate options for carbon sequestration across the estate



Explore opportunities to develop at least one reuse hub in the LCR



Identify opportunities to work with community organisations, SMEs and other stakeholders to develop reuse networks

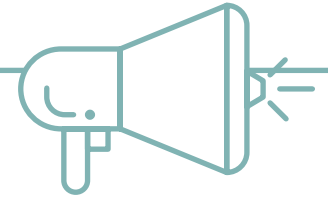


# Our response

We have established a baseline carbon emissions report, which shows that most carbon emissions arise from residual waste treatment. This demonstrates the importance of reducing the amount of residual waste produced by LCR residents.

Reducing the waste we manage will, in turn, reduce the energy we consume when managing resources at our sites and transporting waste to facilities. We can achieve this by aiming for zero waste, increasing the scale of waste prevention and reuse activity alongside increased recycling.

**// This demonstrates the importance of reducing the amount of residual waste produced"**

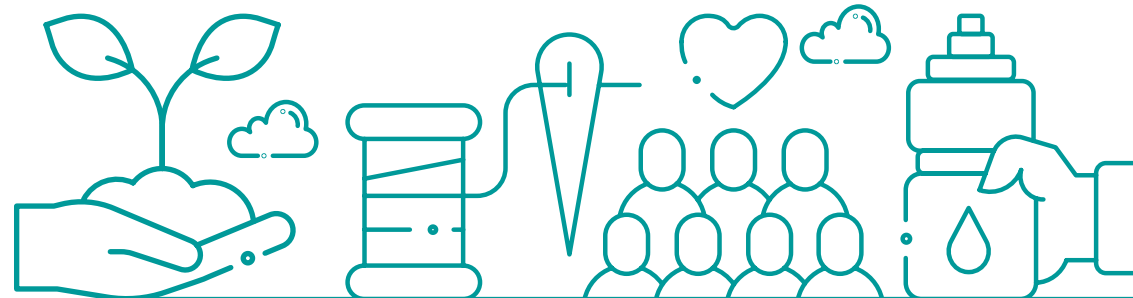


## Case Study

### Carbon Capture Utilisation and Storage (CCUS)

Carbon Capture Utilisation and Storage (CCUS) refers to a group of technologies which capture emissions from industrial processes and combustion to remove carbon from the atmosphere. Captured carbon may be used in other industrial processes or stored under the seabed around our shores.

The increased momentum for climate action is supporting investment in CCUS and the UK has committed to deploy CCUS to capture between 20 to 30 million tonnes of CO<sub>2</sub> per year by 2030. CCUS can help reduce emissions from residual waste treatment, and alongside actions to reduce waste, it can support us in achieving our joint zero waste and net zero carbon goals.



# Reviewing and reporting

## This document will be reviewed by 2025.

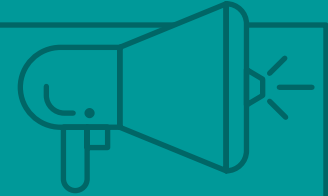
We will develop a detailed action plan to show how we intend to reduce our carbon emissions and work towards our goal of zero waste and net zero carbon. This detailed plan will be reviewed annually, and we will report our progress through the MRWA Annual Report.

**We are committed to playing our part in achieving a net zero carbon and zero waste city region by 2040. Working together, our Plan will help us deliver a prosperous and sustainable future for our communities.**



### Case Study

#### Outstanding Achievement Award for MRWA



The Household Waste Recycling Centre (HWRC) at Old Swan, Liverpool attained an 'Outstanding Achievement' award as part of the national civil engineering CEEQUAL scheme in both 'Material Use' and 'Relationship with Community and Stakeholders' categories.

The construction of the new Centre was able to demonstrate that 100% of all demolition materials were reused, rainwater harvesting was installed, and 95% of the site and its infrastructure could be dismantled and recycled or reused at the end of Centre's operational life. Supporting the construction, the Project Team delivered a detailed local engagement programme with residents, businesses, statutory bodies, environmental groups, and road users.

To shape the project further, the Team worked with a local charity (Merseyside Disability Federation) to enhance the experience for people with disabilities. The Judges commended the Project Team for the range of community engagement and acknowledged that these types of activities are often overlooked on relatively small projects such as Old Swan.

Merseyside Recycling and Waste Authority  
7th Floor  
No. 1 Mann Island  
Liverpool  
L3 1BP



  @zerowastelcr

zerowastelcr@merseysidewda.gov.uk  
(0151) 255 1444

